

One family/two family house for sale in Wincheringen - A18808



Objekt: A18808

Prices & Costs

Purchase Price	€ 898.000,-
Number of outdoor parking spots	2
Number of garages	2

Details of the property

Living space	305 m ²
Utility area in sqm	68 m ²
Total area	373 m ²
Plot area	770 m ²
Rooms	7
Bedrooms	4
Bathrooms	3

Half bathrooms	1
Number of parking spots	4
Balconies	2
Terraces	1
Year of construction	2004

Energy performance certificate

Building type	Residential property
Energy performance certificate	COM_PRIME_Consumption
Valid until	28.07.2024
Energy consumption parameter	21,7kWh/m ² a
Creation Date	Issued from 1.5.2014
Date of issue	29.07.2014
Energy efficiency class	A
Primary energy sources	Luft-Wärme-Pumpe

Features

Bathroom	Shower, Bathtub, Window, Pissoir
Kitchen	Fitted kitchen, Open
Floor	Tiles, Lamination, Granite
Kind of heating	underfloor
Firing	Solar, Air/Water heat pump
Type of parking spot	Garage, Outdoor parking spot
Cable / Satellite TV	Yes
Wasching-/ drying room	Yes
With cellar/basement	Yes
Storage	Yes
Roller blind	Yes
Attic	Yes
Guest WC	Yes

Location

Wormeldange (L): +/- 3 km

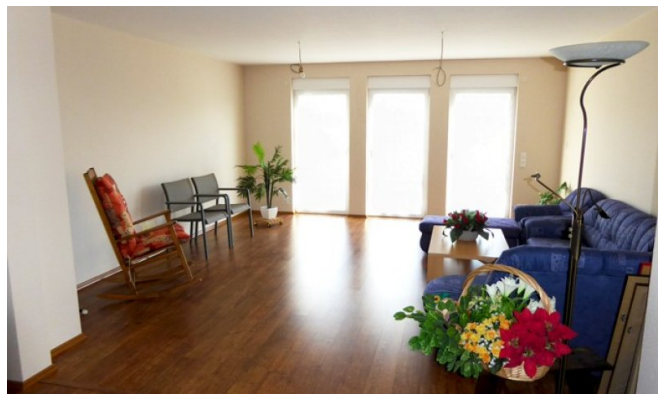
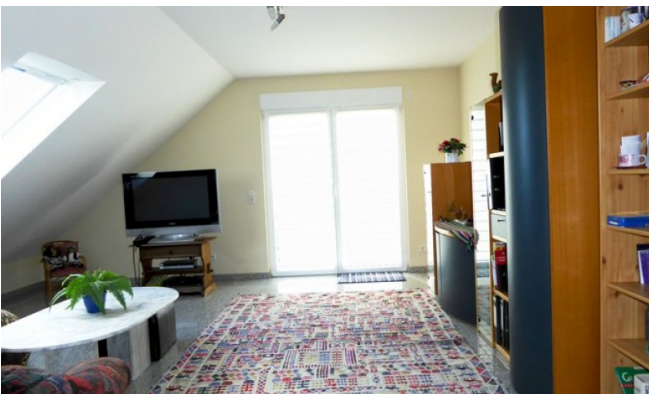
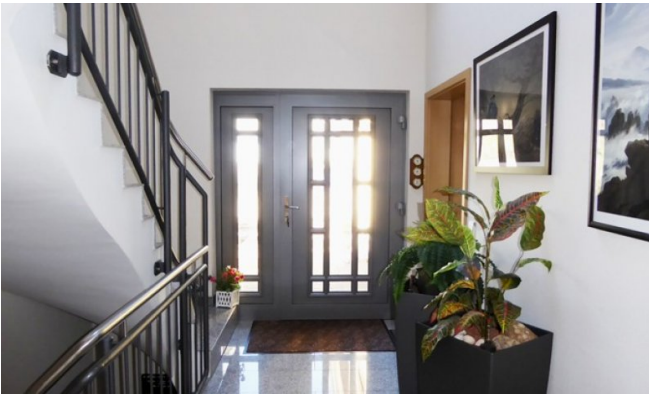
Others

For any further information, photos or arrangement of an appointment don't hesitate to contact us. You will find the

total of our real estate offers at our website: www.erlo.lu.

Please note that the buyer has to pay in addition to the purchase price also further costs as for example: land transfer tax, notary and land charge register costs, etc..

The information provided with the listings may not be totally accurate.





Your Contact Person

Ernst Lohmeier
Erlo S.A. Immobilien
Rue Principale 31
5480 Wormeldange

Telephone main office
Fax
Email
Website

+352 28 20 76 76
+352 28 20 76 78
mail@erlo.lu
<https://www.erlo.lu>