

Apartment for sale in Palzem - A18174



Objekt: A18174

Prices & Costs

Client's courtage	3,57 %, incl. VAT
Purchase Price	€ 469.000,-
Number of outdoor parking spots	1
Number of spots in a basement garage	1

Details of the property

Living space	124 m ²
Rooms	3
Bedrooms	2
Bathrooms	1
Half bathrooms	1
Number of parking spots	2
Balconies	1

Year of construction	2017
Condition of the property	Well kept

Features

Bathroom	Shower, Bathtub, Window
Kitchen	Fitted kitchen, Open
Floor	Tiles, Parquet
Kind of heating	underfloor
Firing	Air/Water heat pump
Elevator	Persons
Type of parking spot	Underground garage, Outdoor parking spot
With cellar/basement	COM_PRIME_ausstattung_unterkellert_JA
Storage	Yes
Roller blind	Yes
Construction type	Massive
Guest WC	Yes

Location

close to the border of Luxembourg Remich (L): +/- 4 km Wormeldange (L): +/- 8 km Luxembourg-Kirchberg (L): +/- 24 km

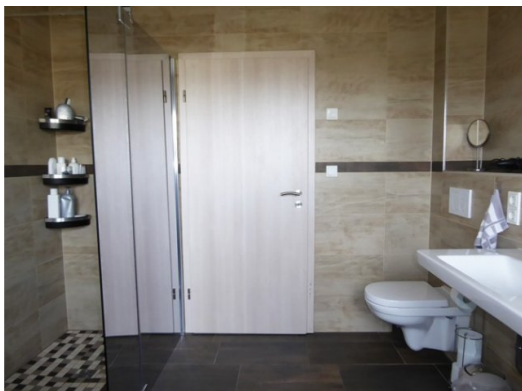
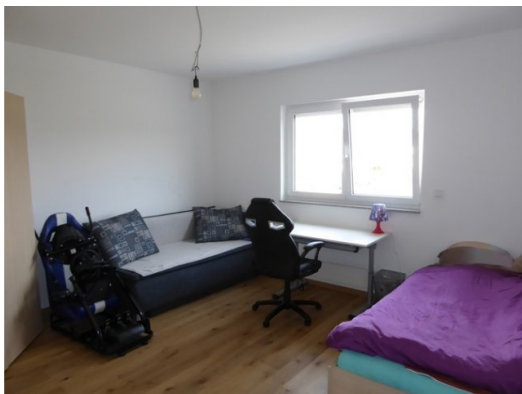
Others

Please note: the energy pass for this property does not exist until now.

For any further information, photos or arrangement of an appointment don't hesitate to contact us. You will find the total of our real estate offers at our website: www.erlo.lu.

Please note that the buyer has to pay in addition to the purchase price also further costs as for example: land transfer tax, notary and land charge register costs, etc..

The information provided with the listings may not be totally accurate. Subject to prior sale.





Your Contact Person

Ernst Lohmeier
Erlo S.A. Immobilien
Rue Principale 31
5480 Wormeldange

Telephone main office
Fax
Email
Website

+352 28 20 76 76
+352 28 20 76 78
mail@erlo.lu
<https://www.erlo.lu>